



Iarnród Éireann  
Irish Rail



# Moyross Station Project

Consultation on the Emerging Preferred Option



Rialtas  
na hÉireann  
Government  
of Ireland

Tionscadal Éireann  
Project Ireland  
2040

## Iarnród Éireann plan to construct a new rail station in the ‘Civic Heart of Moyross’ to provide more sustainable public transport links and to support regeneration of the local area.

Iarnród Éireann plan to construct a new rail station in the Moyross area of Limerick. The project will be funded by the National Transport Authority (NTA), as part of the Department of Transport’s Pathfinder Programme, which includes 35 exemplar transport projects to be delivered by local authorities and agencies around the country.

The new Moyross station will be located on the existing Limerick to Galway rail line and will provide new public transport links for the growing population in this area, with connectivity to Limerick city centre, Galway, Cork, Dublin and beyond. Located in the ‘Civic Heart of Moyross’, the new station will provide connections to local attractions such as Thomond Park and the TUS Gaelic Grounds, as well as the Technological University of the Shannon (TUS) and other educational and civic amenities.

The new station will also integrate with Limerick City and County Council’s proposed University Avenue scheme, as well as the NTA’s BusConnects Limerick, and the proposed Limerick CycleConnects Network.

The National Planning Framework ‘Project Ireland 2040’ indicates strong population and economic growth for Limerick, with a minimum target population for Limerick city and suburbs of 141,000 by 2040. Limerick has a very low uptake of public transport services, with only 6% of commuting journeys (to work, college, or school) by public transport, compared to 60% by private car each day.

The provision of a new rail station in Moyross is highlighted

as one of the rail-based measures in the Limerick Shannon Metropolitan Area Transport Strategy (LSMATS) 2040 and was also listed as an objective in the Limerick Development Plan 2022 - 2028.

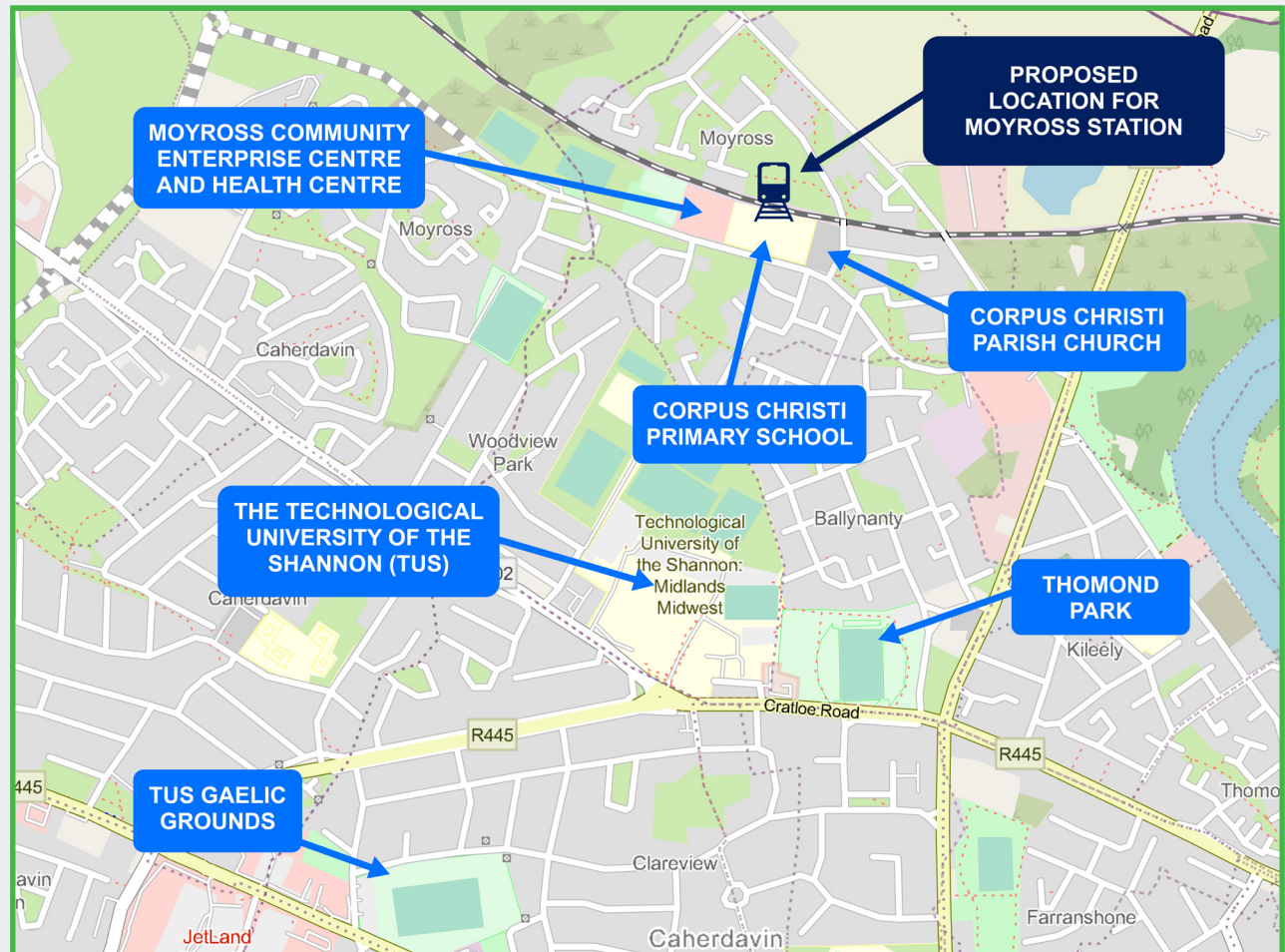
The new Moyross station will assist the regeneration of this area and will support the National Strategic objective of ‘Compact Growth’ as outlined in the National Development Plan 2021 - 2030.



Location of the proposed new Moyross Station on the Limerick - Galway line

## Proposed Location

The emerging preferred option for the location of Moyross station is to the rear of Corpus Christi Primary School and Moyross Community Enterprise Centre. Access to the station is proposed adjacent to both Corpus Christi Parish Church, and Moyross Health Centre.

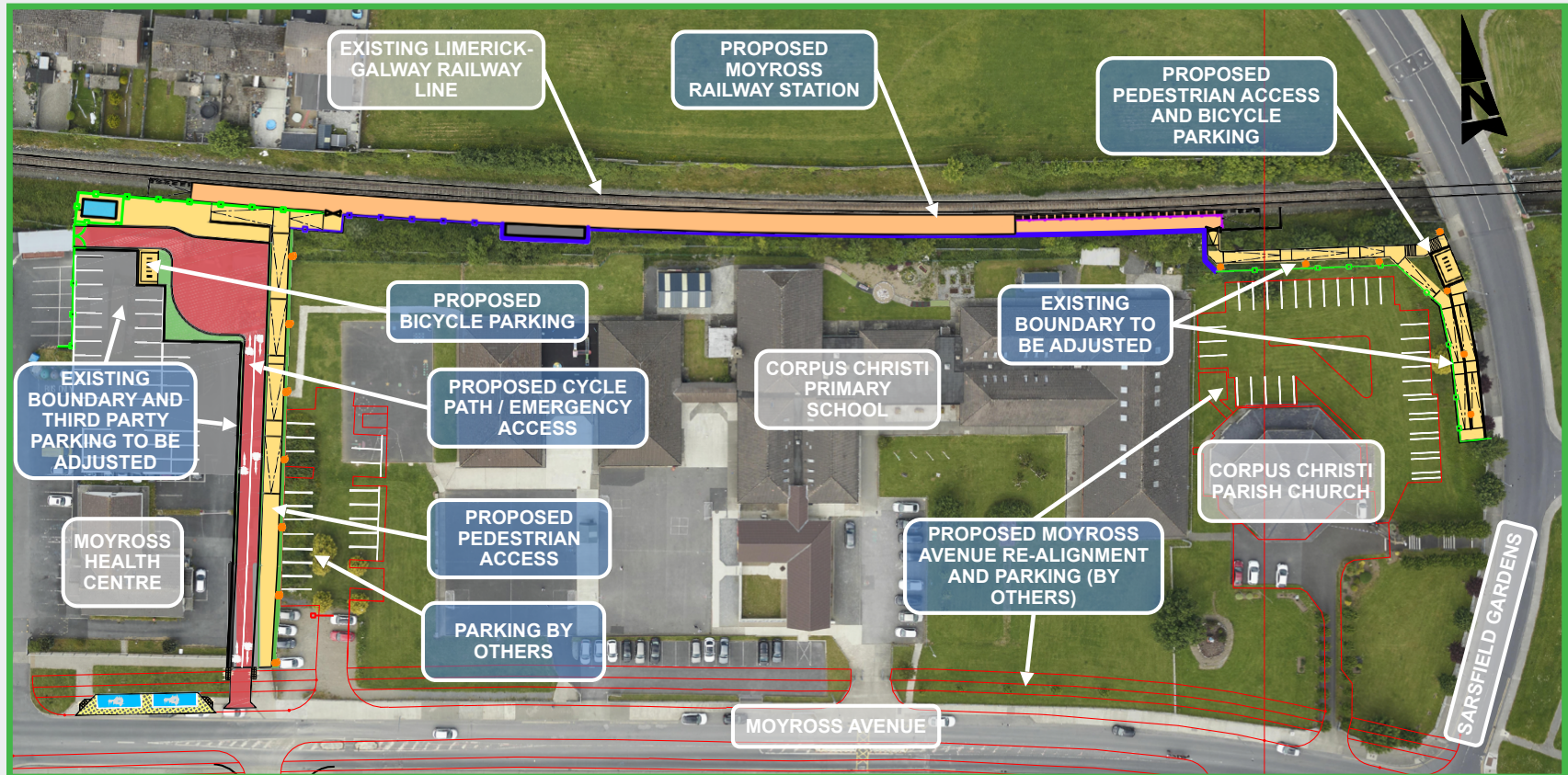


Location of the emerging preferred option for Moyross Station



## Proposed Location and Facilities

The proposed new platform will be approximately 145m in length, to accommodate two 3-car trains coupled together. In addition the new platform will be between 3m and 4.5m in width to include ticket vending machines, public information and public address systems, and passenger shelters. The station will have two entrances, one near each platform end.



Proposed scheme layout



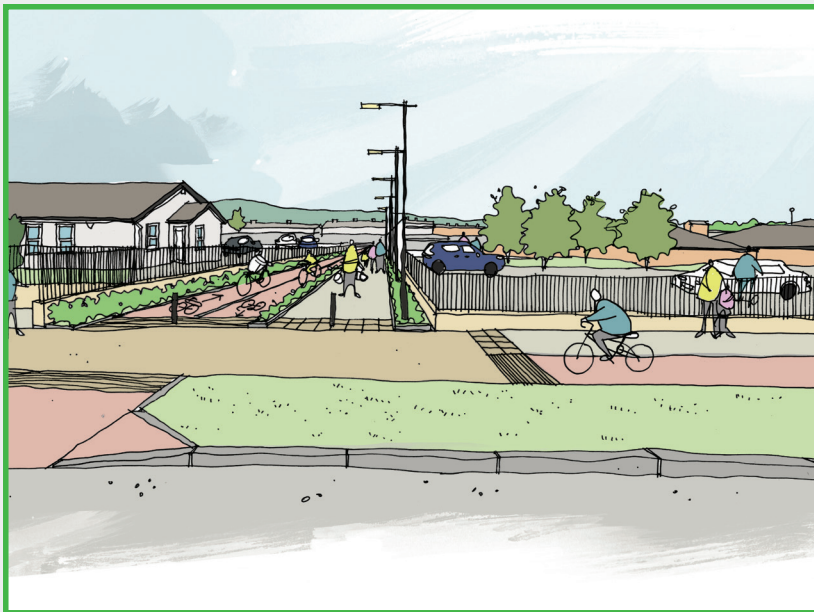
## Proposed Location and Facilities



Artist's impression of platform

## Proposed Station Access

The proposed western entrance to the station is to be located between Corpus Christi Primary School and Moyross Health Centre and will be accessible to both pedestrians and cyclists via a new access from Moyross Avenue. A bicycle parking facility will also be provided near to the platform entrance. The cycle path will also serve as an access for emergency and maintenance vehicles with removable bollards to control access.



Artist's impression of western access

The proposed eastern entrance to the station is to be located off Sarsfield Gardens, south of the existing rail overbridge and will be accessible to pedestrians. A covered bicycle parking facility will also be provided near to the start of the ramp and steps.

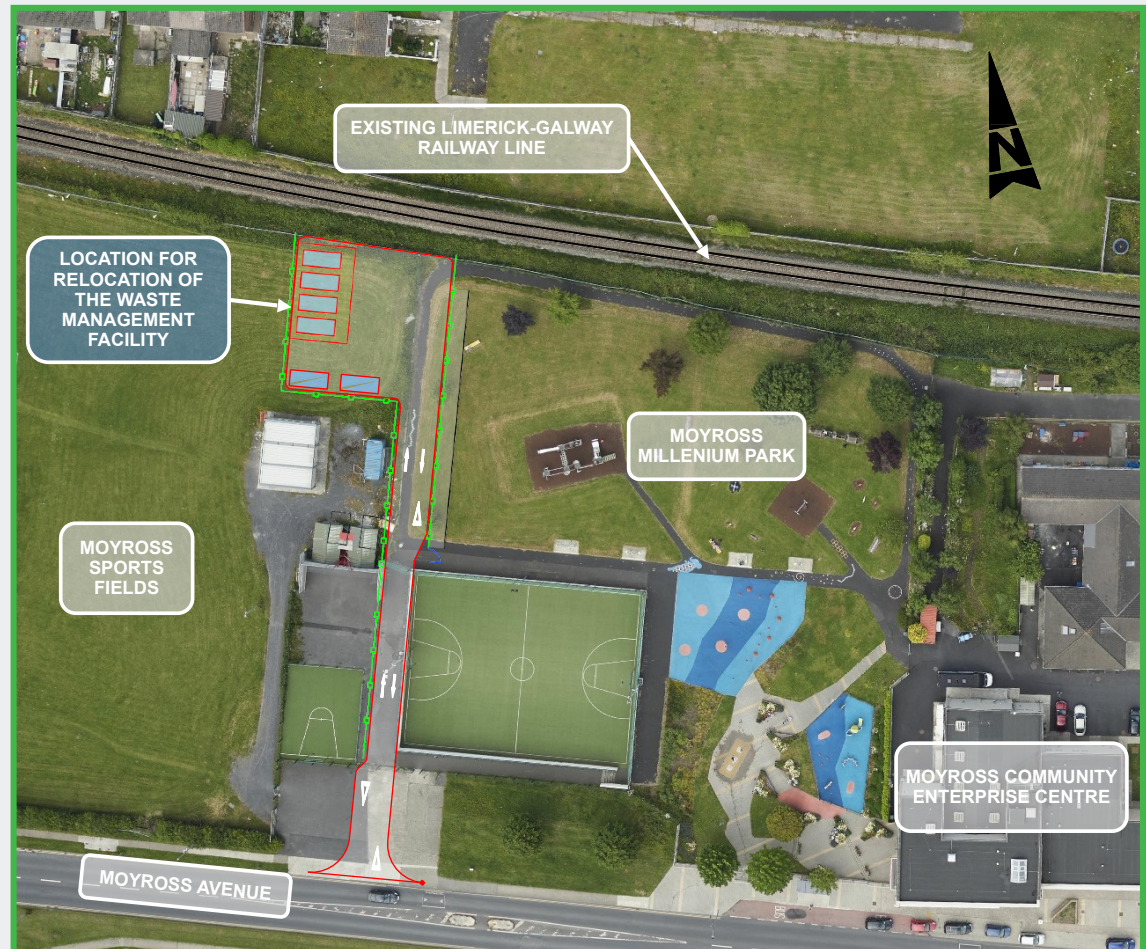


Artist's impression of eastern access



## Relocation of Existing Amenities

The existing waste management facility to the rear of Moyross Health Centre is also proposed to be relocated to a vacant area of land adjacent to Moyross Millennium Park.



Proposed layout of waste management facility

## Benefits of Moyross Station

---



Centrally located in the 'Civic Heart of Moyross', providing improved public transport links to educational and community facilities, including TUS, Thomond Park, and TUS Gaelic Grounds



By 2043 almost 7000 people will live within a 15 min walk of the proposed new Moyross Station



Improved public transport connections for the people of Moyross, with approximate journey times of 11 mins to Limerick Colbert, 15 mins to Sixmilebridge, 32 mins to Ennis, and less than 2 hours to Galway



Encourages multiple modes of sustainable transport through the provision of bicycle parking



Supports the sustainable regeneration of Moyross and the surrounding area



Encourages more sustainable travel choices by providing an alternative to private car journeys, thus reducing transport related CO2 emissions



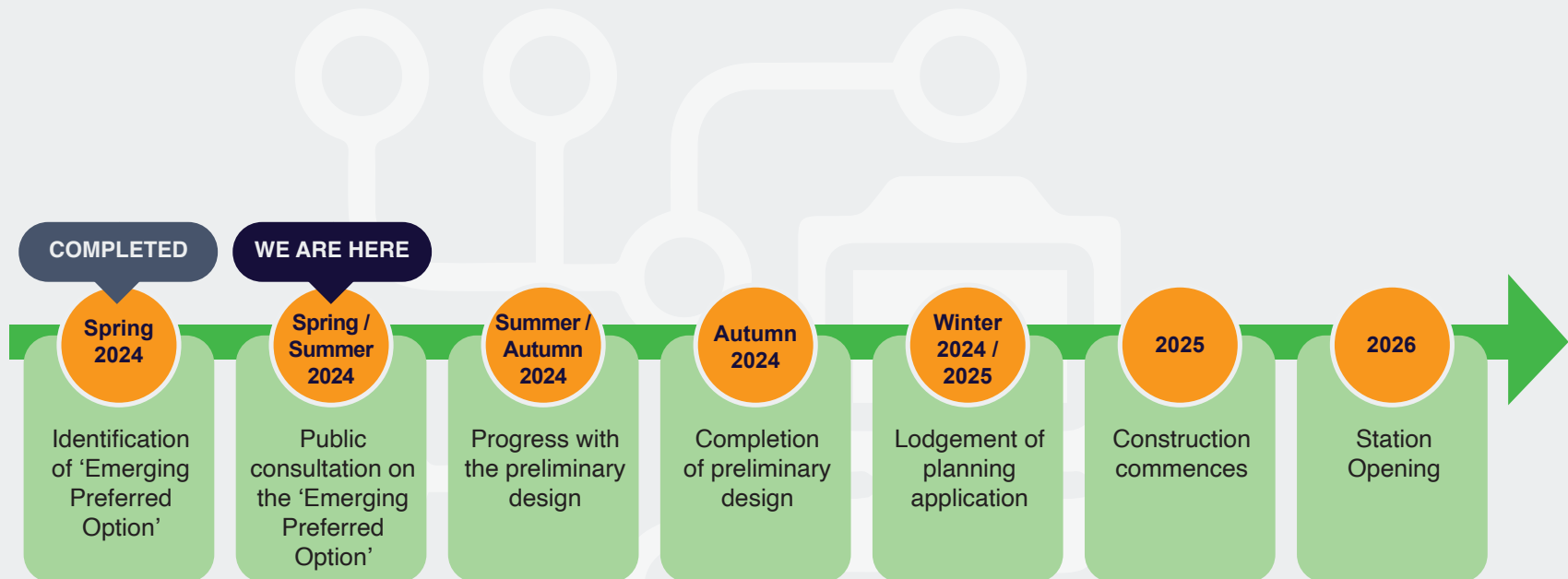
Integrates with existing and proposed transport networks, including the proposed University Avenue strategic link road between Moyross Avenue and Old Cratloe Road, BusConnects Limerick, and the proposed Limerick CycleConnects



Designed with flexibility to accommodate the potential future double-tracking of the line and addition of a second platform on the northern side of the track at the station



# Timeline



These timeframes are subject to successful grant of planning as well as allocation of funding for the project.

## How to Engage

---

The public consultation is taking place from **Monday 20th May 2024 to Friday 14th June 2024.**

You are invited to contribute to this consultation process to express opinions on the emerging preferred option for Moyross Station.

You are also invited to attend our public information evening to learn more about the project and meet with members of the design team.

### Moyross Community Enterprise Centre

Wednesday 5th June 2024: 4:00pm – 8:00pm

You can provide feedback by email or by post:

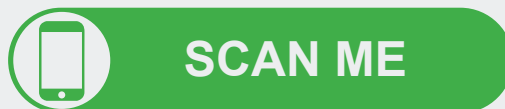
**Email the project team using:** [moyross@irishrail.ie](mailto:moyross@irishrail.ie)

**Or post us your feedback to:**

Moyross Station Consultation  
CX District Office  
Colbert Station  
Parnell Street  
Limerick  
V94 H2PP



## Further Information



Visit the project website for additional information about the project including downloads of this project brochure, and plans of the proposed scheme.

[www.irishrail.ie/moyross](http://www.irishrail.ie/moyross)



