

- NOTES**
- Do not scale from this drawing.
 - Size and location of all structures is indicative only and to be determined through design development.

- LEGEND**
- Railway line
 - Section marker
 - Start and end of CCA sub-cells
 - Extent of proposed works under scheme

Rev	Rev. Date	Purpose of revision	Drawn	Checked	Rev'd	Apprv'd
A	08/10/2024	For client comment	DT	JS	JD	DK

Client

Designer:

Merrion House, Merrion Rd, Dublin 4, Ireland. D04R2C5. Tel: +44 (0)203 9802000 www.jacobs.com

Project

Drawing title

**CCA6.1
CONCEPT DESIGN
PLAN**

Drawing status

For review and comment

State Code	Contract / Work Package 6.1		
Project Stage	Project Concept, Feasibility & Option Selection		
Scale	1:5000	DO NOT SCALE	
Jacobs No.	D3658300	Rev	A
Client no.	7694		
Drawing number	Project No	Work Package	Phase
	7694- CCA6.1	- P2	-
Type	Discipline	Originator	Number
DWG - CV	- JAC	-	0400



C:\pwworking\jacobs-emea-01\1890147694-CCA6.1-P2-DWG-CV-JAC-0400.dwg - 08/10/2024 14:59:58 - A1Frame - TALBOTDK

Reproduced by permission of Ordnance Survey Ireland/Government of Ireland. All rights reserved. © Ordnance Survey license number CYAL50298398.

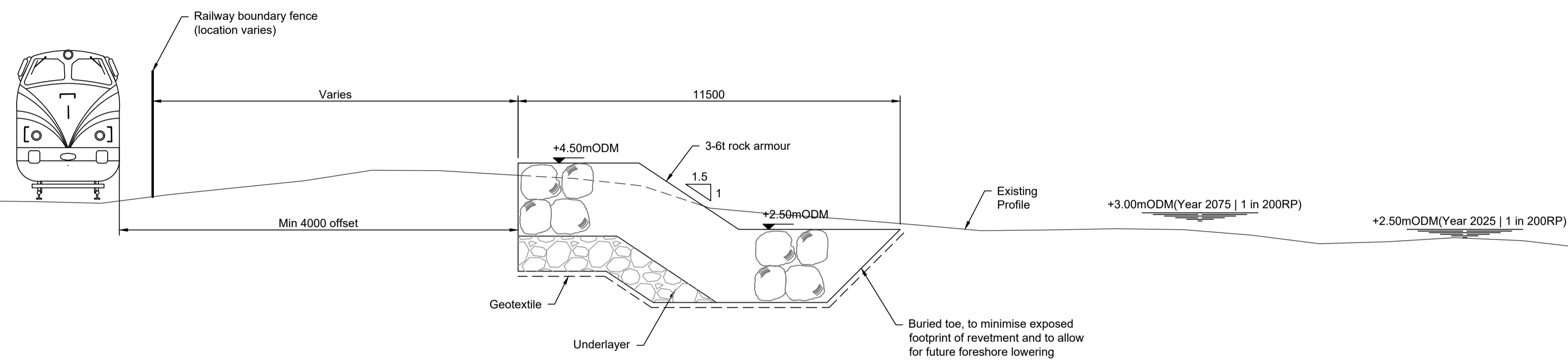
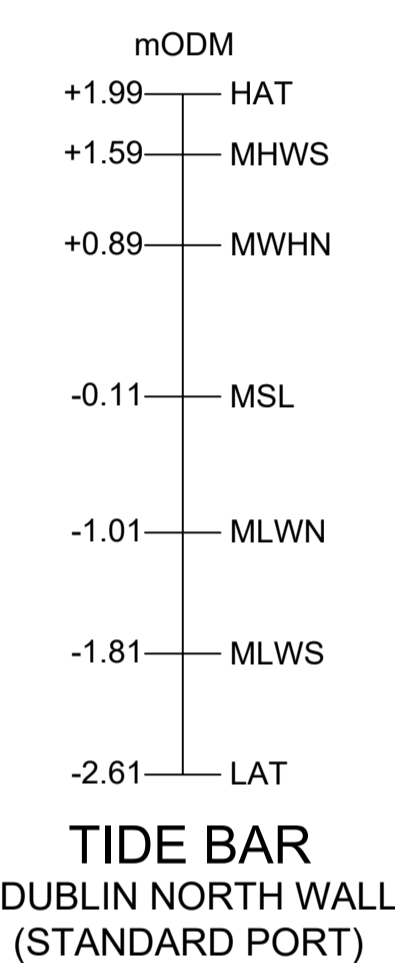
© Copyright 2023 Jacobs U.K. Limited. The concepts and information contained in this document are the property of Jacobs. Use or copying of this document in whole or in part without the written permission of Jacobs constitutes an infringement of copyright. Limitation: This drawing has been prepared on behalf of, and for the exclusive use of, Jacobs' Client, and is subject to, and issued in accordance with, the provisions of the contract between Jacobs and the Client. Jacobs accepts no liability or responsibility whatsoever for, or in respect of, any use of, or reliance upon, this drawing by any third party.

Notes:

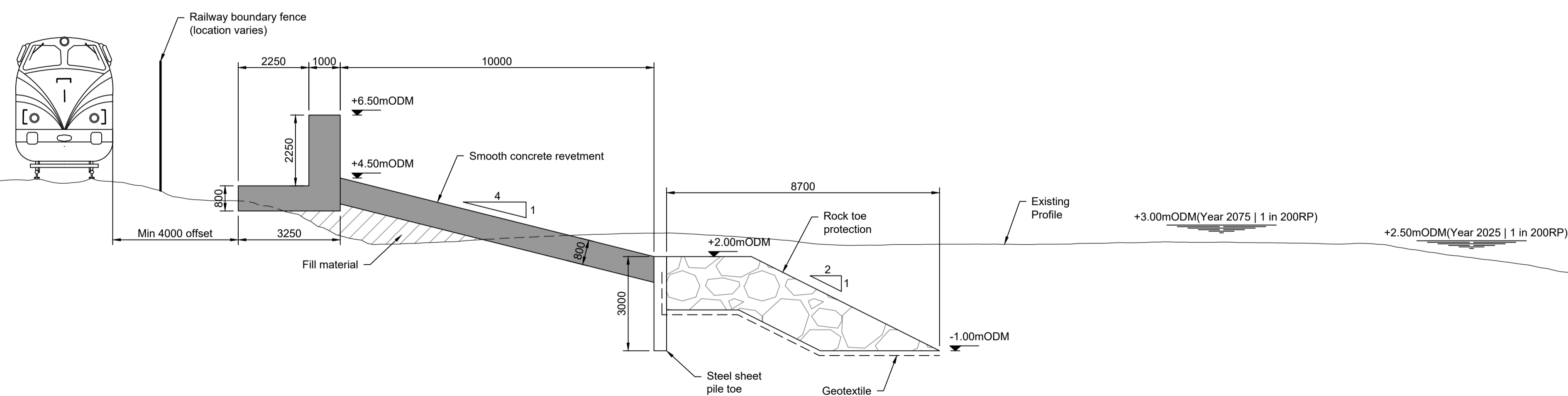
1. All levels are in mODM
2. Do not scale from this drawing.
3. Additional tide conversions are available for high and low water (spring and neap tides) at Secondary Ports of Dublin Bar, Dun Laoghaire, Greystones (high only) and Wicklow. High tides at CCA6 are typically 1.2m lower than at Dublin.
4. All levels and dimensions are approximate and to be confirmed through design development.
5. For cross section locations refer to drawing 7694-CCA6_1-P2-DWG-CV-JAC-0400.

Legend

-  New Reinforced Concrete Wall
-  Geotextile



CCA6.1-D1 - TYPICAL CROSS SECTION ROCK REVETMENT
Scale 1:100



CCA6.1-D5 - TYPICAL CROSS SECTION CONCRETE REVETMENT WITH ROCK TOE PROTECTION
Scale 1:100

Rev	Rev. Date	Purpose of revision	Drawn	Checked	Rev'd	Apprv'd
A	08/10/2024	For client comment	DT	JS	JD	DK

Client


Designer:

Merion House, Merion Rd, Dublin 4,
Ireland. D04R2C5. Tel: +44 (0)203 9802000
www.jacobs.com

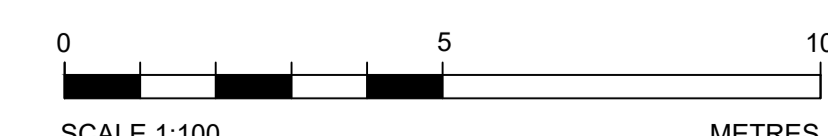
Project


Drawing title
**CCA6.1 D
CONCEPT DESIGN
CROSS SECTION**

Drawing status
For review and comment

State Code	Contract / Work Package 6.1		
Project Stage	Project Concept, Feasibility & Option Selection		
Scale	1:50	DO NOT SCALE	
Jacobs No.	D3658300	Rev	A
Client no.	7694		

Drawing number	Project No	Work Package	Phase
7694- CCA6_1 -P2 -			
DWG - CV - JAC - 0410	Type	Discipline	Originator
			Number



C:\pwworking\jacobs-emea-01\1890147694-CCA6_1-P2-DWG-CV-JAC-0410.dwg - 08/10/2024 15:08:19 - A\Fram - TALBOTDK



© Ordnance Survey Ireland 2023/OSI, NMA, 180. All elevations are in metres and relate to OSI Geoid Model (OSGM02) Malin Head as defined by existing Project Control. All Co-ordinates are in Irish Transverse Mercator Grid (ITM) as defined by OSI active GPS station Tallaght College (TLLG).

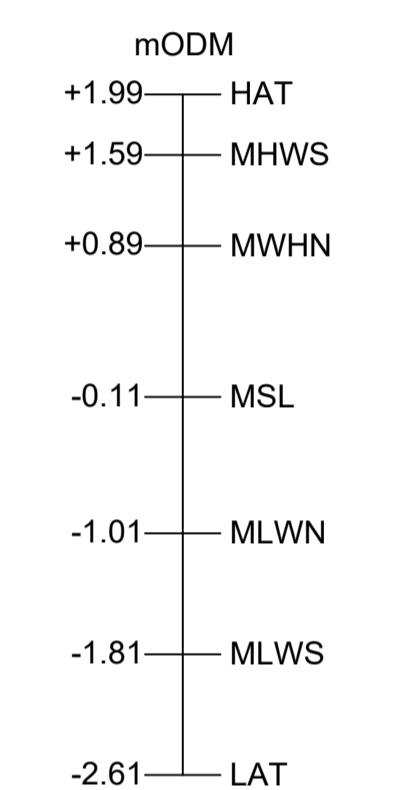
© Copyright 2023 Jacobs U.K. Limited. The concepts and information contained in this document are the property of Jacobs. Use or copying of this document in whole or in part without the written permission of Jacobs constitutes an infringement of copyright. Limitation: This drawing has been prepared on behalf of, and for the exclusive use of, Jacobs' Client, and is subject to, and issued in accordance with, the provisions of the contract between Jacobs and the Client. Jacobs accepts no liability or responsibility whatsoever for, or in respect of, any use of, or reliance upon, this drawing by any third party.

Notes:

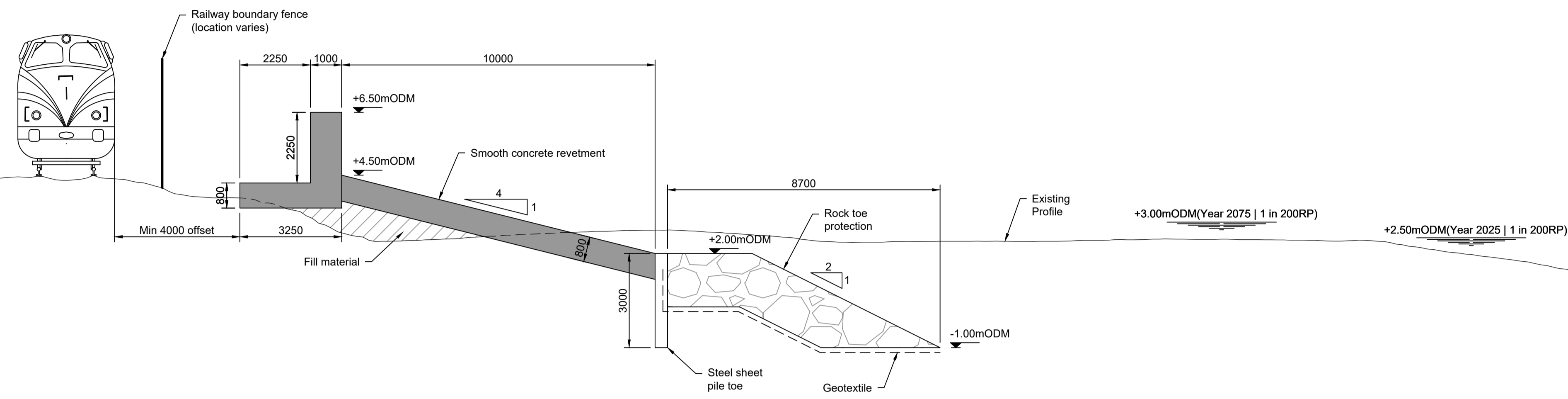
- All levels are in mODM
- Do not scale from this drawing.
- Additional tide conversions are available for high and low water (spring and neap tides) at Secondary Ports of Dublin Bar, Dun Laoghaire, Greystones (high only) and Wicklow. High tides at CCA6 are typically 1.2m lower than at Dublin.
- All levels and dimensions are approximate and to be confirmed during design development.
- For cross section locations refer to drawing 7694-CCA6_1-P2-DWG-CV-JAC-0400.

Legend

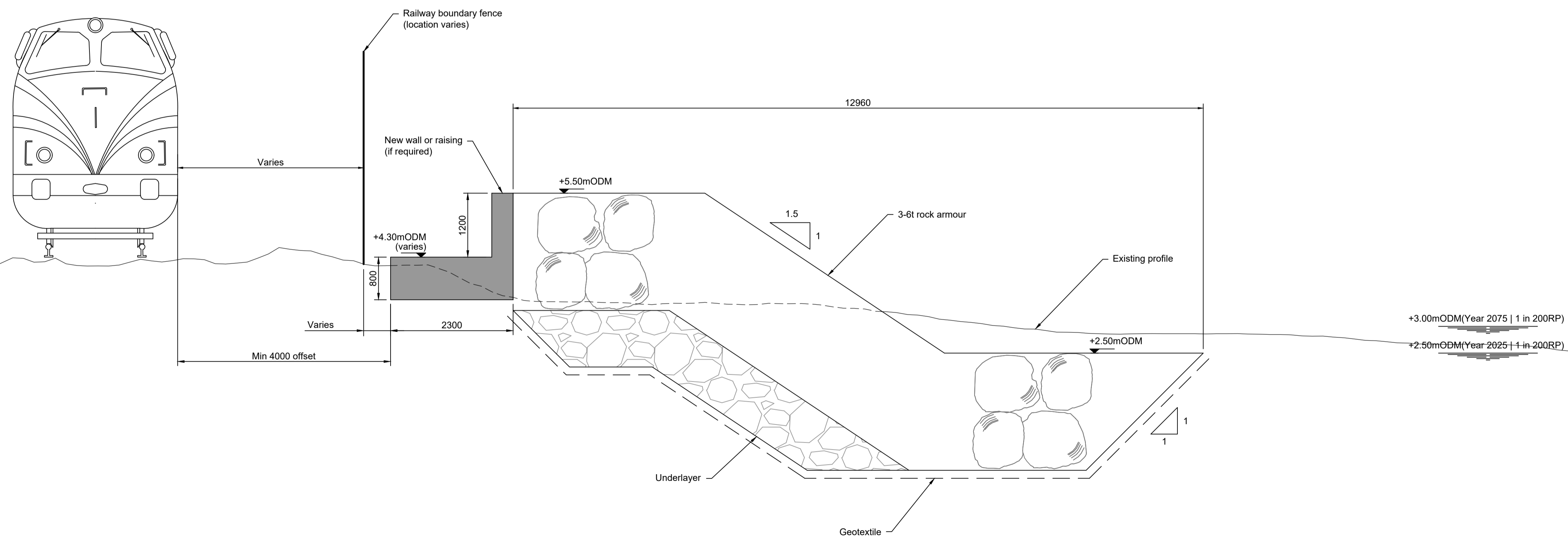
-  New Reinforced Concrete Wall
-  Geotextile



**TIDE BAR
DUBLIN NORTH WALL
(STANDARD PORT)**






CCA6.1-E1 - TYPICAL CROSS SECTION
Scale 1:100



CCA6.1-E2 - TYPICAL CROSS SECTION
Scale 1:50

Rev	Rev. Date	Purpose of revision	Drawn	Checked	Rev'd	Apprv'd
A	08/10/2024	For client comment	DT	JS	JD	DK

Client	Designer	Project	Drawing title	Drawing status
	 Merion House, Merion Rd, Dublin 4, Ireland. D04R2C5. Tel: +44 (0)203 9802000 www.jacobs.com		CCA6.1-E1 & E2 CONCEPT DESIGN CROSS SECTIONS	For review and comment

State Code	Contract / Work Package 6.1				
Project Stage	Project Concept, Feasibility & Option Selection				
Scale	1:50	DO NOT SCALE			
Jacobs No.	D3658300	Rev	A		
Client no.	7694				
Drawing number	Project No	Work Package	Phase		
	7694- CCA6_1	-P2	-		
	Type	Discipline	Originator	Number	
	DWG - CV	- JAC	-	0411	

State Code	Contract / Work Package 6.1				
Project Stage	Project Concept, Feasibility & Option Selection				
Scale	1:50	DO NOT SCALE			
Jacobs No.	D3658300	Rev	A		
Client no.	7694				
Drawing number	Project No	Work Package	Phase		
	7694- CCA6_1	-P2	-		
	Type	Discipline	Originator	Number	
	DWG - CV	- JAC	-	0411	

State Code	Contract / Work Package 6.1				
Project Stage	Project Concept, Feasibility & Option Selection				
Scale	1:50	DO NOT SCALE			
Jacobs No.	D3658300	Rev	A		
Client no.	7694				
Drawing number	Project No	Work Package	Phase		
	7694- CCA6_1	-P2	-		
	Type	Discipline	Originator	Number	
	DWG - CV	- JAC	-	0411	

State Code	Contract / Work Package 6.1				
Project Stage	Project Concept, Feasibility & Option Selection				
Scale	1:50	DO NOT SCALE			
Jacobs No.	D3658300	Rev	A		
Client no.	7694				
Drawing number	Project No	Work Package	Phase		
	7694- CCA6_1	-P2	-		
	Type	Discipline	Originator	Number	
	DWG - CV	- JAC	-	0411	

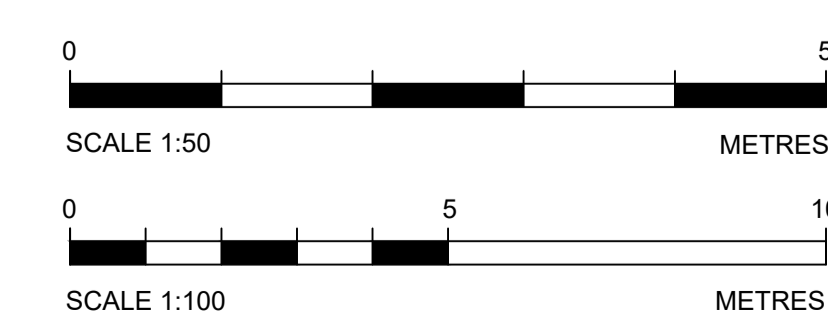
State Code	Contract / Work Package 6.1				
Project Stage	Project Concept, Feasibility & Option Selection				
Scale	1:50	DO NOT SCALE			
Jacobs No.	D3658300	Rev	A		
Client no.	7694				
Drawing number	Project No	Work Package	Phase		
	7694- CCA6_1	-P2	-		
	Type	Discipline	Originator	Number	
	DWG - CV	- JAC	-	0411	

State Code	Contract / Work Package 6.1				
Project Stage	Project Concept, Feasibility & Option Selection				
Scale	1:50	DO NOT SCALE			
Jacobs No.	D3658300	Rev	A		
Client no.	7694				
Drawing number	Project No	Work Package	Phase		
	7694- CCA6_1	-P2	-		
	Type	Discipline	Originator	Number	
	DWG - CV	- JAC	-	0411	

State Code	Contract / Work Package 6.1				
Project Stage	Project Concept, Feasibility & Option Selection				
Scale	1:50	DO NOT SCALE			
Jacobs No.	D3658300	Rev	A		
Client no.	7694				
Drawing number	Project No	Work Package	Phase		
	7694- CCA6_1	-P2	-		
	Type	Discipline	Originator	Number	
	DWG - CV	- JAC	-	0411	

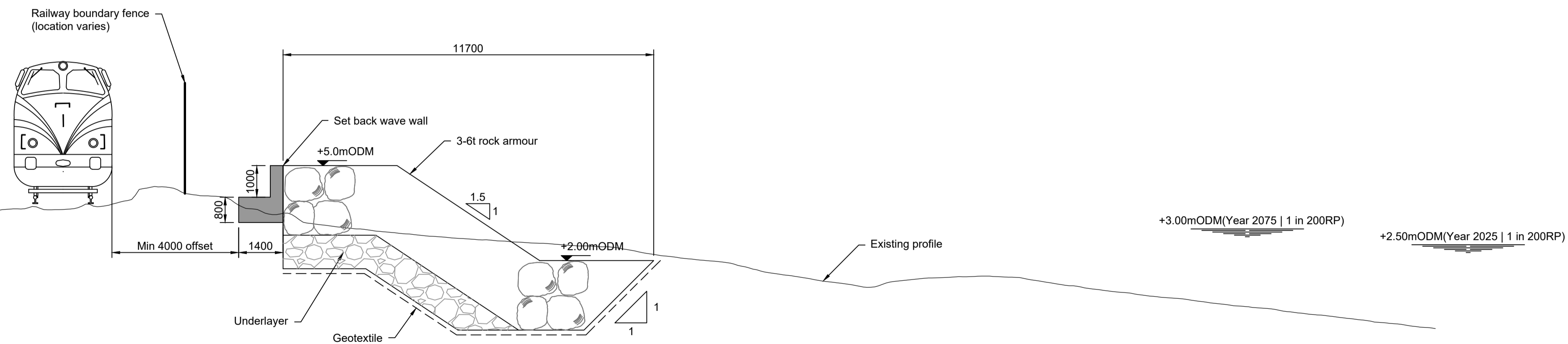
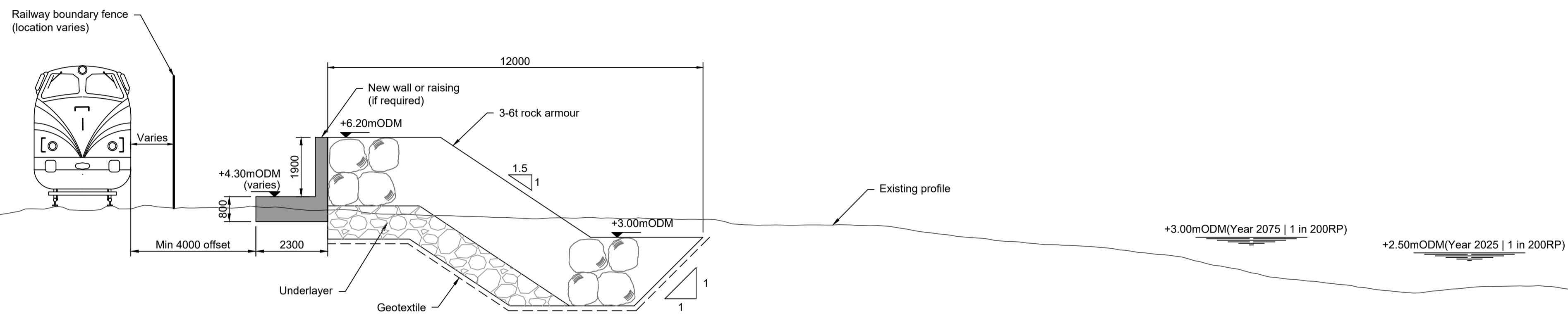
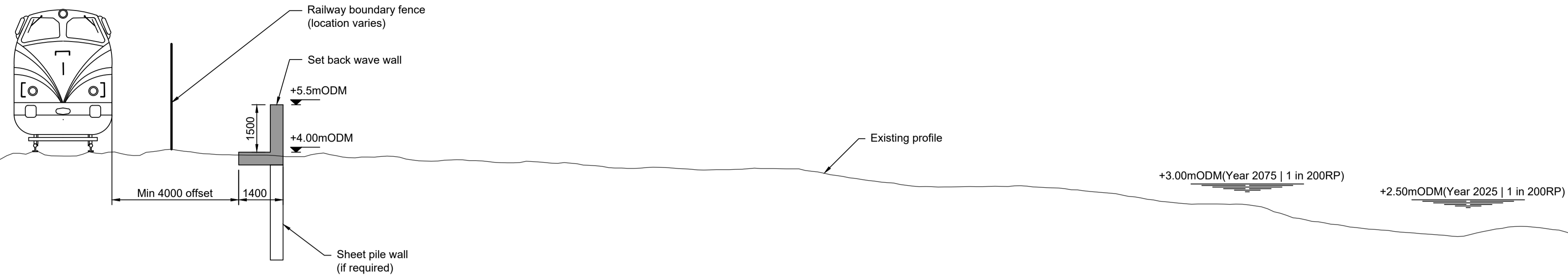
State Code	Contract / Work Package 6.1				
Project Stage	Project Concept, Feasibility & Option Selection				
Scale	1:50	DO NOT SCALE			
Jacobs No.	D3658300	Rev	A		
Client no.	7694				
Drawing number	Project No	Work Package	Phase		
	7694- CCA6_1	-P2	-		
	Type	Discipline	Originator	Number	
	DWG - CV	- JAC	-	0411	

© Copyright 2023 Jacobs U.K. Limited. The concepts and information contained in this document are the property of Jacobs. Use or copying of this document in whole or in part without the written permission of Jacobs constitutes an infringement of copyright. Limitation: This drawing has been prepared on behalf of, and for the exclusive use of, Jacobs' Client, and is subject to, and issued in accordance with, the provisions of the contract between Jacobs and the Client. Jacobs accepts no liability or responsibility whatsoever for, or in respect of, any use of, or reliance upon, this drawing by any third party.



C:\pwworking\jacobs-emea-01\10189014\7694-CCA6_1-P2-DWG-CV-JAC-0411.dwg - 08/10/2024 15:17:26 - A\FRAME - TALBOTDK

© Ordnance Survey Ireland 2023/OSI, NMA, 180. All elevations are in metres and relate to OSI Geoid Model (OSGM02) Malin Head as defined by existing Project Control. All Co-ordinates are in Irish Transverse Mercator Grid (ITM) as defined by OSI active GPS station Tallaght College (TLLG).

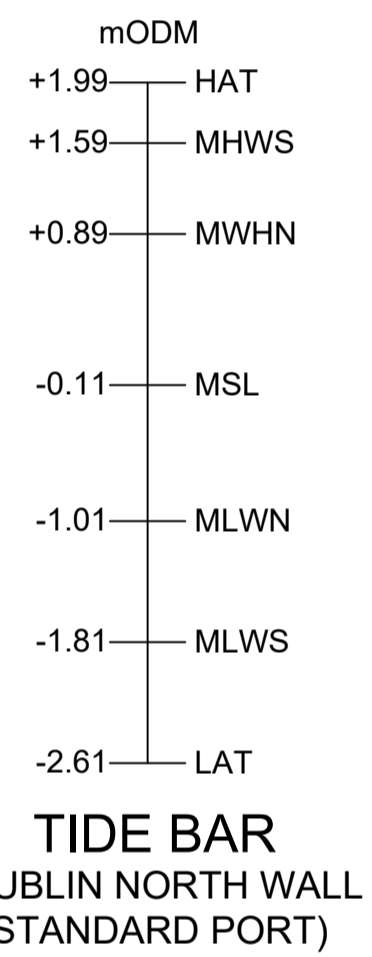


Notes:

1. All levels are in mODM
2. Do not scale from this drawing.
3. Additional tide conversions are available for high and low water (spring and neap tides) at Secondary Ports of Dublin Bar, Dun Laoghaire, Greystones (high only) and Wicklow. High tides at CCA6 are typically 1.2m lower than at Dublin.
4. All levels and dimensions are approximate and to be confirmed through design development.
5. For cross section locations refer to drawing 7694-CCA6_1-P2-DWG-CV-JAC-0400.

Legend

- █ New Reinforced Concrete Wall
- - - Geotextile



Rev	Rev. Date	Purpose of revision	Drawn	Checked	Rev'd	Apprv'd
A	08/10/2024	For client comment	DT	JS	JD	DK

Client: **larnród Éireann
Irish Rail**

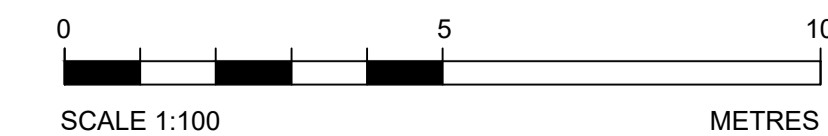
Designer: **Jacobs**
Merion House, Merion Rd, Dublin 4,
Ireland. D04R2C5. Tel: +44 (0)203 9802000
www.jacobs.com

Project: **ECRIPP**
Environmental
Risk
Impact
Prevention
Program

Drawing title: **CCA6.1-E3, E4 & E5
CONCEPT DESIGN
CROSS SECTIONS**

Drawing status: **For review and comment**

State Code	Contract / Work Package 6.1		
Project Stage	Project Concept, Feasibility & Option Selection		
Scale	1:100	DO NOT SCALE	
Jacobs No.	D3658300	Rev	A
Client no.	7694		
Drawing number	Project No	Work Package	Phase
7694- CCA6_1 -P2 -			
Type	Discipline	Originator	Number
DWG - CV - JAC - 0412			



C:\pwworking\jacobs-emea-01\0189014\7694-CCA6_1-P2-DWG-CV-JAC-0412.dwg - 08/10/2024 15:25:37 - A1Frame - TALBOTDK

© Ordnance Survey Ireland 2023/OSI, NMA, 180. All elevations are in metres and relate to OSI Geoid Model (OSGM02) Malin Head as defined by existing Project Control. All Co-ordinates are in Irish Transverse Mercator Grid (ITM) as defined by OSI active GPS station Tallaght College (TLLG).

© Copyright 2023 Jacobs U.K. Limited. The concepts and information contained in this document are the property of Jacobs. Use or copying of this document in whole or in part without the written permission of Jacobs constitutes an infringement of copyright. Limitation: This drawing has been prepared on behalf of, and for the exclusive use of, Jacobs' Client, and is subject to, and issued in accordance with, the provisions of the contract between Jacobs and the Client. Jacobs accepts no liability or responsibility whatsoever for, or in respect of, any use of, or reliance upon, this drawing by any third party.