

CCA5 - Site Location Plan - Part 1



CCA5 - Site Location Plan - Part 2



NOTES

- All levels are in mODM.
- Do not scale from this drawing.
- Size and location of all structures is indicative only and to be determined through design development.

LEGEND

- Railway line
- Railway line (Tunnel)
- Bray-Greystones Cliff Walk

Sub-Cell	Sub-cell Name	Length (m)
CCA5-A	Bray Head	3000
CCA5-B	Greystones Cliffs	1500

Rev	Rev. Date	Purpose of revision	Drawn	Checked	Rev'd	Apprv'd
V01	29.02.2024	Client Accepted	AE	RM	JG	DK
B	24.01.2023	Comments addressed	AE	JG	JUD	DK
A	30.11.2023	Draft Issue For Information	PC	JG	JUD	DK

Client: Iarnród Éireann Irish Rail

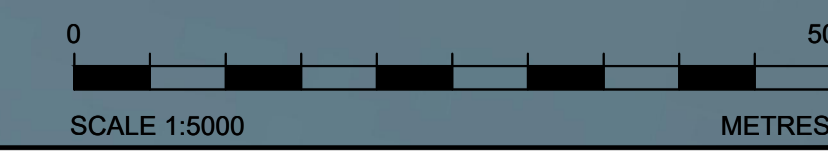
Designer: Jacobs
Merrion House, Merrion Rd, Dublin 4, Ireland, D04R2C3, Tel: +44 (0)203 9802000 www.jacobs.com

Project: ECRIPP

Drawing title: **CONCEPT DESIGN
CCA 5
SITE LOCATION PLAN**

Drawing status: **Accepted**

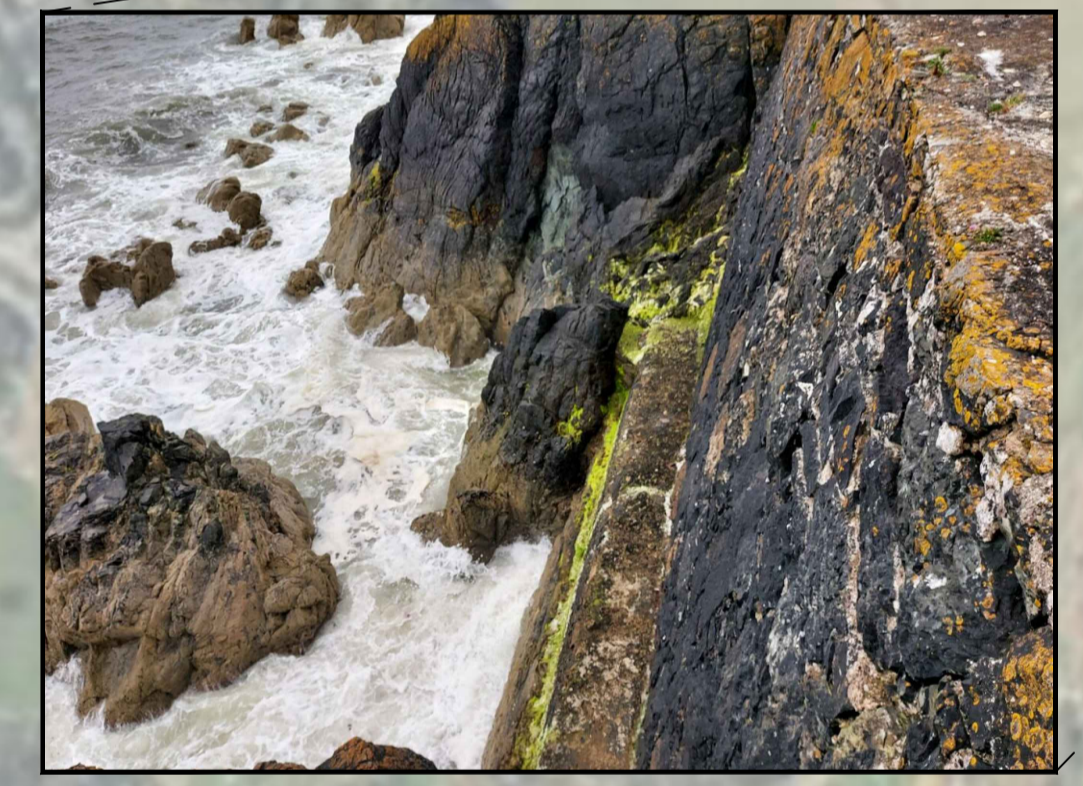
State Code	Contract / Work Package 5		
Project Stage	Project Concept, Feasibility & Option Selection		
Scale	1:5000	DO NOT SCALE	
Jacobs No.	D3658300	Rev	V01
Client no.	7694		
Drawing number	Project No	Work Package	Phase
	7694-	CCA5	-P2-
	Type	Discipline	Originator
	DWG - CV	- JAC	- 0001



© Copyright 2023 Jacobs U.K. Limited. The concepts and information contained in this document are the property of Jacobs. Use or copying of this document in whole or in part without the written permission of Jacobs constitutes an infringement of copyright. Limitation: This drawing has been prepared on behalf of and for the exclusive use of Jacobs' Client, and is subject to, and issued in accordance with, the provisions of the contract between Jacobs and the Client. Jacobs accepts no liability or responsibility whatsoever for, or in respect of, any use of, or reliance upon, this drawing by any third party.

C:\pwworking\jacobs-emea-01\601890147694-CCA5-P2-DWG-CV-JAC-0001.dwg - 29/02/2024 13:06:23 - Layout - RMD59324

© Ordnance Survey Ireland 2023/OSI_NMA_180. All elevations are in metres and relate to OSI Geoid Model (OSGM02) Malin Head as defined by existing Project Control. All Co-ordinates are in Irish Transverse Mercator Grid (ITM) as defined by OSI active GPS station Tallaght College (TLLG).
Microsoft product imagery reprinted with permission from Microsoft Corporation.
© 2023 Microsoft Corporation © 2023 Maxar ©CNES (2023) Distribution Airbus DS



NOTES

- All levels are in mODM.
- Do not scale from this drawing.
- Size and location of all structures is indicative only and to be determined through design development.
- The interventions described on this plan will be common to all options (Option A, B & C)

LEGEND

- Railway line
- Railway line (Tunnel)
- Bray-Greystones Cliff Walk

Proposed works

- Rock revetment

Sub-Cell	Sub-cell Name	Length (m)
CCA5-A	Bray Head	3000
CCA5-B	Greystones Cliffs	1500

Rev	Rev. Date	Purpose of revision	Drawn	Checked	Rev'd	Apprv'd
V01	29.02.2024	Client Accepted	AE	RM	JG	DK
B	24.01.2024	Comments addressed	AE	JG	JUD	DK
A	30.11.2023	Draft Issue For Information	PC	JG	JUD	DK

Client:

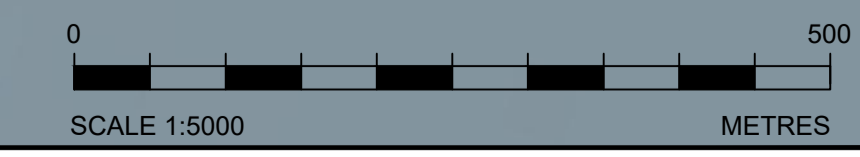
Designer:
Merrion House, Merrion Rd, Dublin 4, Ireland, D04R2C5, Tel: +44 (0)203 9802000 www.jacobs.com

Project:

Drawing title: **CONCEPT DESIGN
CCA 5A
OPTIONS A, B & C PLAN**

Drawing status: **Accepted**

State Code	Contract / Work Package 5		
Project Stage	Project Concept, Feasibility & Option Selection		
Scale	1:5000	DO NOT SCALE	
Jacobs No.	D3658300	Rev	V01
Client no.	7694		
Drawing number	7694- CCA5	Work Package	Phase
	DWG - CV	- JAC	- 0100

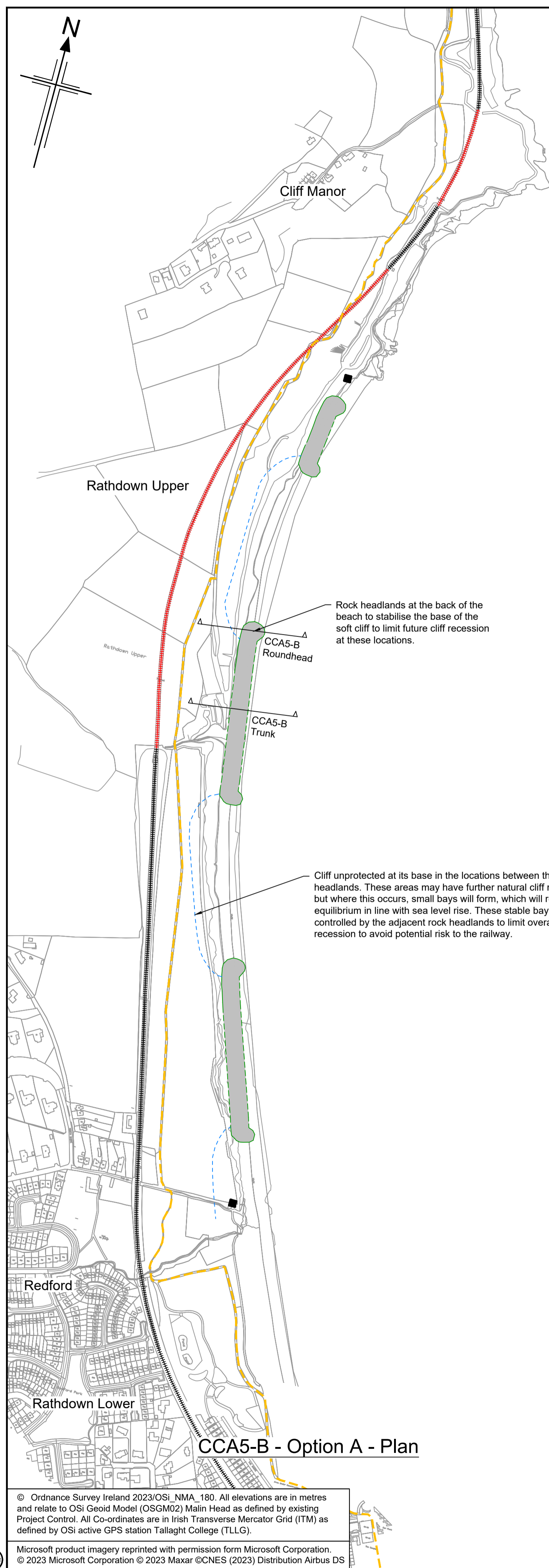


© Copyright 2023 Jacobs U.K. Limited. The concepts and information contained in this document are the property of Jacobs. Use or copying of this document in whole or in part without the written permission of Jacobs constitutes an infringement of copyright. Limitation: This drawing has been prepared on behalf of and for the exclusive use of Jacobs' Client, and is subject to, and issued in accordance with, the provisions of the contract between Jacobs and the Client. Jacobs accepts no liability or responsibility whatsoever for, or in respect of, any use of, or reliance upon, this drawing by any third party.

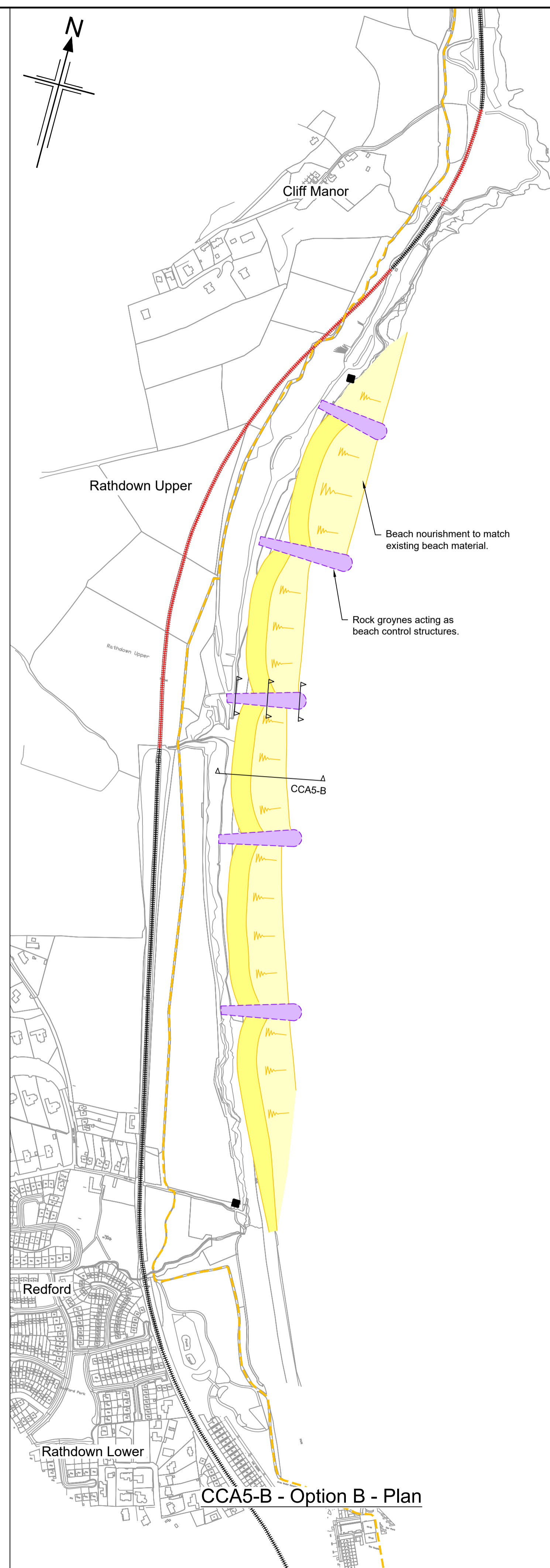
C:\pwworking\jacobs-emea-01\601417694-CCA5-P2-DWG-CV-JAC-0100.dwg - 29/02/2024 13:08:08 - Layout - RMD59324

© Ordnance Survey Ireland 2023/OSI, NMA, 180. All elevations are in metres and relate to OSI Geoid Model (OSGM02) Malin Head as defined by existing Project Control. All Co-ordinates are in Irish Transverse Mercator Grid (ITM) as defined by OSI active GPS station Tallaght College (TLLG).
© 2023 Microsoft Corporation © 2023 Maxar ©CNES (2023) Distribution Airbus DS

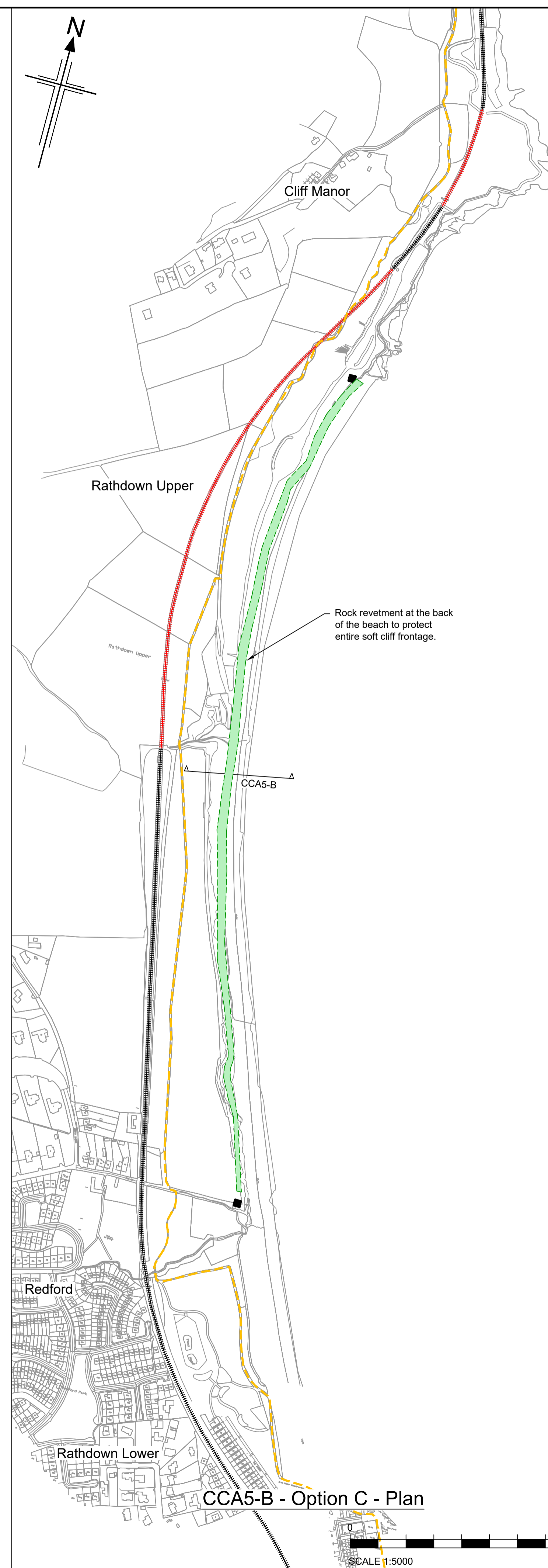
CCA5-A - Options Plan



CCA5-B - Option A - Plan



CCA5-B - Option B - Plan



CCA5-B - Option C - Plan



- All levels are in mODM.
- Do not scale from this drawing.
- Size and location of all structures is indicative only and to be determined through design development.

LEGEND

- Section locations
- Railway line
- Railway line (Tunnel)
- Bray-Greystones Cliff Walk

Proposed Works

- Rock headland
- Rock revetment
- Groyne
- Line of future cliff recession (cliff toe)
- Beach nourishment

Rev	Rev. Date	Purpose of revision	Drawn	Checked	Rev'd	Appr'd
V01	29.02.2024	Client Accepted	AE	RM	JG	DK
B	24.01.2024	Comments addressed	AE	JG	JUD	DK
A	30.11.2023	Draft Issue For Information	PC	JG	JUD	DK

Client: **lanród Éireann Irish Rail**

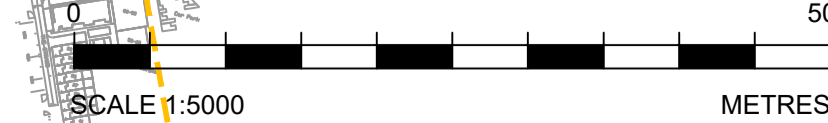
Designer: **Jacobs**
 Merrion House, Merrion Rd, Dublin 4, Ireland, D04R2C5, Tel: +44 (0)203 9802000
 www.jacobs.com

Project: **ECRIPP**
 lanród Éireann

Drawing title: **CONCEPT DESIGN CCA 5B OPTION A, B & C PLAN**

Drawing status: **Accepted**

State Code	Contract / Work Package 5		
Project Stage	Project Concept, Feasibility & Option Selection		
Scale	1:5000	DO NOT SCALE	
Jacobs No.	D3658300	Rev	V01
Client no.	7694		
Drawing number	Project No	Work Package	Phase
7694- CCA5	7694- CCA5	- P2	-
DWG- CV	- JAC	-	-
	Type	Discipline	Originator
	DWG- CV	- JAC	-
		Number	0110

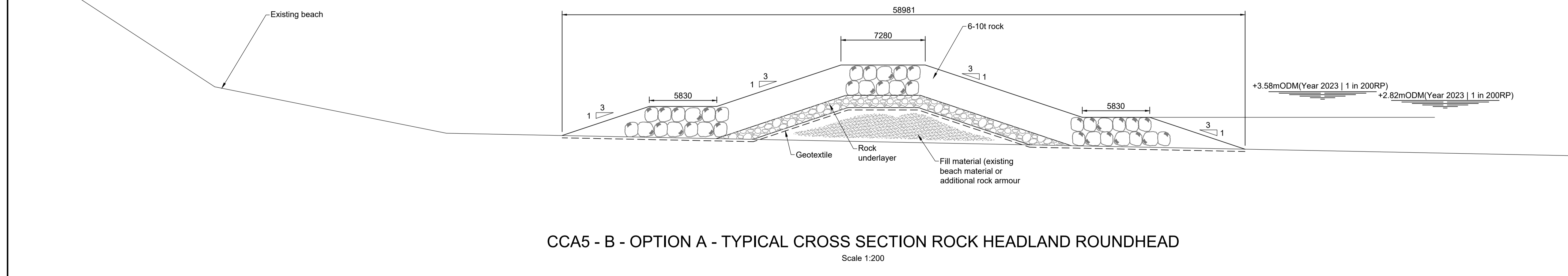
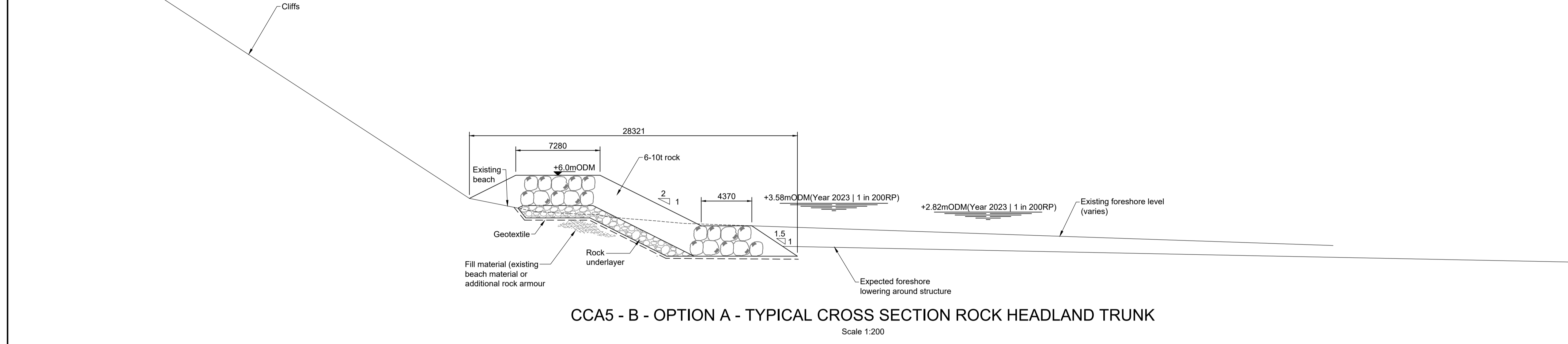
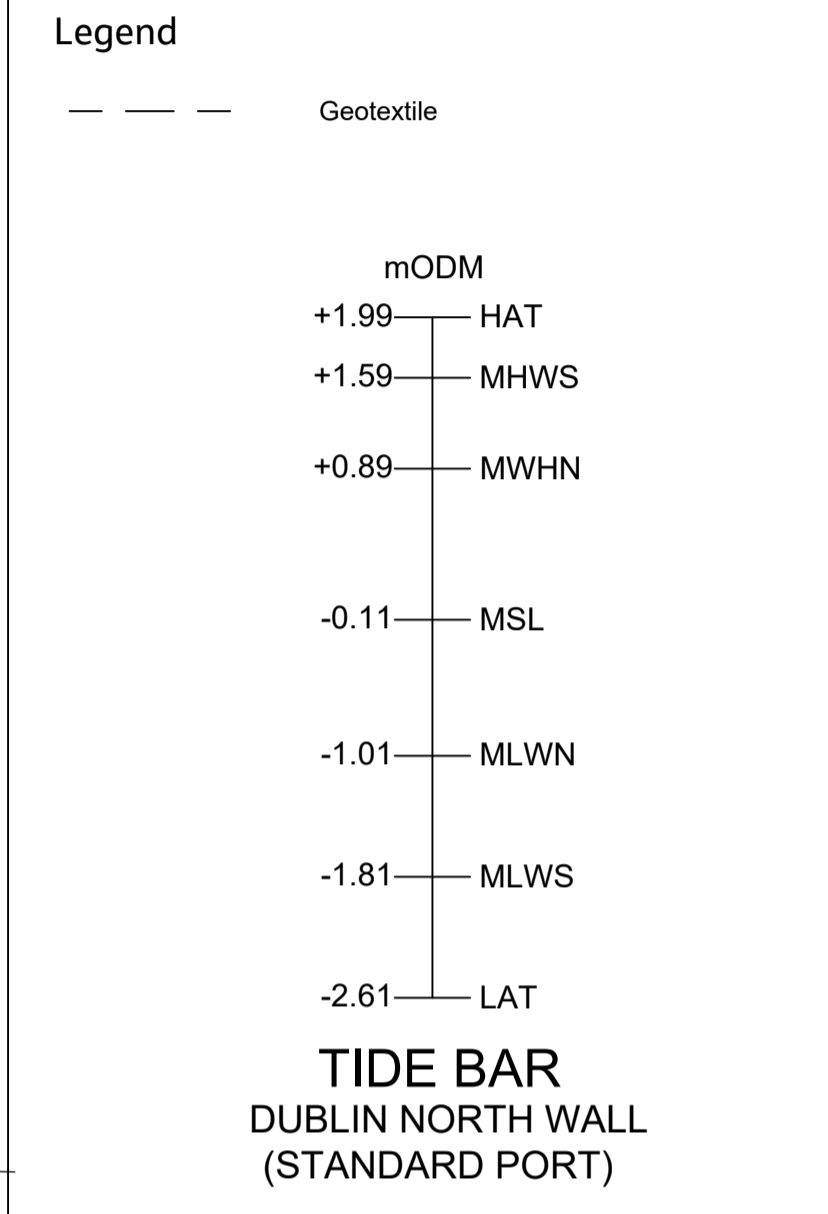


C:\pwworking\jacobs-emea-01\601890147694-CCA5-P2-DWG-CV-JAC-0110.dwg - 29/02/2024 13:09:38 - Layout - RMD59324

© Ordnance Survey Ireland 2023/OSI, NMA, 180. All elevations are in metres and relate to OSI Geoid Model (OSGM02) Malin Head as defined by existing Project Control. All Co-ordinates are in Irish Transverse Mercator Grid (ITM) as defined by OSI active GPS station Tallaght College (TLLG).
 Microsoft product imagery reprinted with permission from Microsoft Corporation.
 © 2023 Microsoft Corporation © 2023 Maxar ©CNES (2023) Distribution Airbus DS

© Copyright 2023 Jacobs U.K. Limited. The concepts and information contained in this document are the property of Jacobs. Use or copying of this document in whole or in part without the written permission of Jacobs constitutes an infringement of copyright. Limitation: This drawing has been prepared on behalf of and for the exclusive use of Jacobs' Client, and is subject to, and issued in accordance with, the provisions of the contract between Jacobs and the Client. Jacobs accepts no liability or responsibility whatsoever for, or in respect of, any use of, or reliance upon, this drawing by any third party.

- Notes:**
- All levels are in mODM
 - Do not scale from this drawing.
 - Additional tide conversions are available for high and low water (spring and neap tides) at Secondary Ports of Dublin Bar, Dun Laoghaire, Greystones (high only) and Wicklow. High tides at CCA6 are typically 1.2m lower than at Dublin.
 - All levels and dimensions are approximate and to be confirmed through design development.
 - Topography taken from Lidar, 2011. To be updated on completion of 2023 UAV survey.
 - For cross section locations refer to drawing 7694-CCA5-P2-DWG-CV-JAC-0110.



V01	29-02-2024	Client Accepted	AE	RM	JG	DK
B	24-01-2024	Comments addressed	AE	JG	JUD	DK
A.1	30-11-2023	Draft issue for information	AE	JG	JUD	DK
Rev	Rev. Date	Purpose of revision	Drawn	Checked	Rev'd	Apprv'd

Client

Designer:

Merrion House, Merrion Rd, Dublin 4, Ireland, D04R2C3, Tel: +44 (0)203 9802000 www.jacobs.com

Project

Drawing title

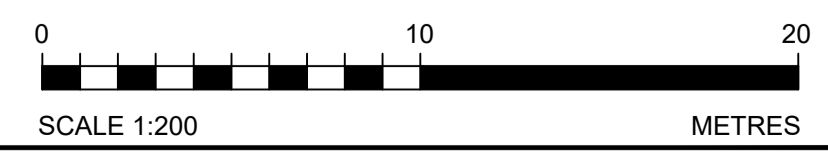
**CCA5-B
CROSS SECTIONS
OPTION A**

Drawing status

Accepted

State Code	Contract / Work Package 5		
Project Stage	Project Concept, Feasibility & Option Selection		
Scale	1:200	DO NOT SCALE	
Jacobs No.	D3658300	Rev	V01
Client no.	7694		

Drawing number	Project No	Work Package	Phase
7694- DWG-CV	CCA5	-P2	-
	Type	Discipline	Originator
		JAC	-0210



© Ordnance Survey Ireland 2023/OSI_NMA_180. All elevations are in metres and relate to OSI Geoid Model (OSGM02) Malin Head as defined by existing Project Control. All Co-ordinates are in Irish Transverse Mercator Grid (ITM) as defined by OSI active GPS station Tallaght College (TLLG).

© Copyright 2023 Jacobs U.K. Limited. The concepts and information contained in this document are the property of Jacobs. Use or copying of this document in whole or in part without the written permission of Jacobs constitutes an infringement of copyright. Limitation: This drawing has been prepared on behalf of and for the exclusive use of Jacobs' Client, and is subject to, and issued in accordance with, the provisions of the contract between Jacobs and the Client. Jacobs accepts no liability or responsibility whatsoever for, or in respect of any use of, or reliance upon, this drawing by any third party.

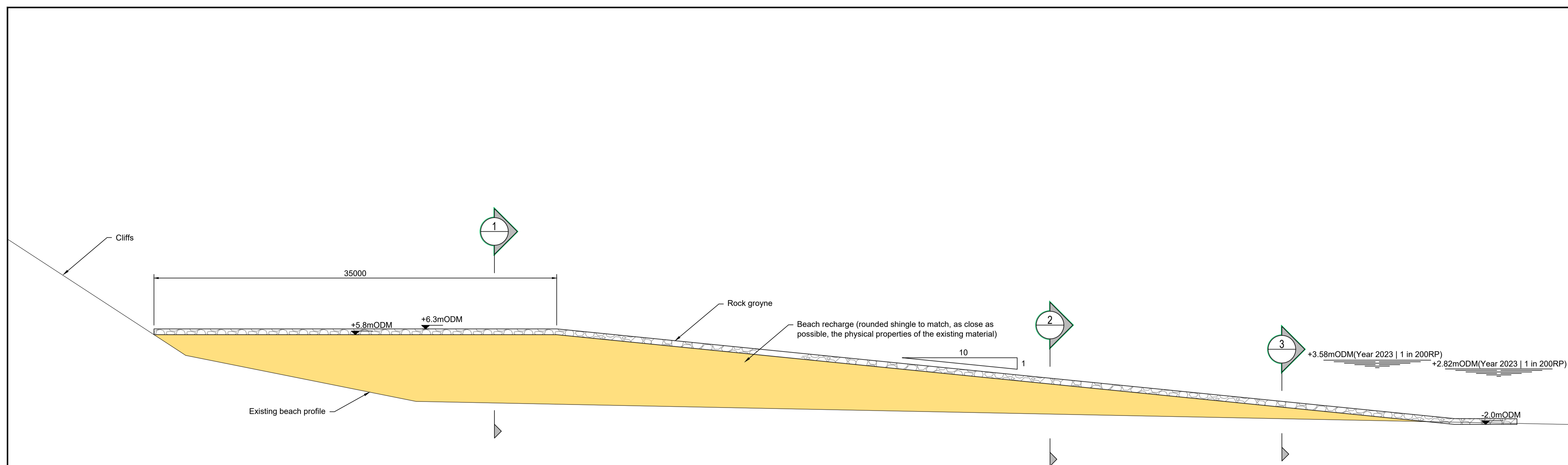
C:\pwworking\jacobs-emea-01\680147694-CCA5-P2-DWG-CV-JAC-0210.dwg - 29/02/2024 13:10:42 - A1Frame - RM059524

Notes:

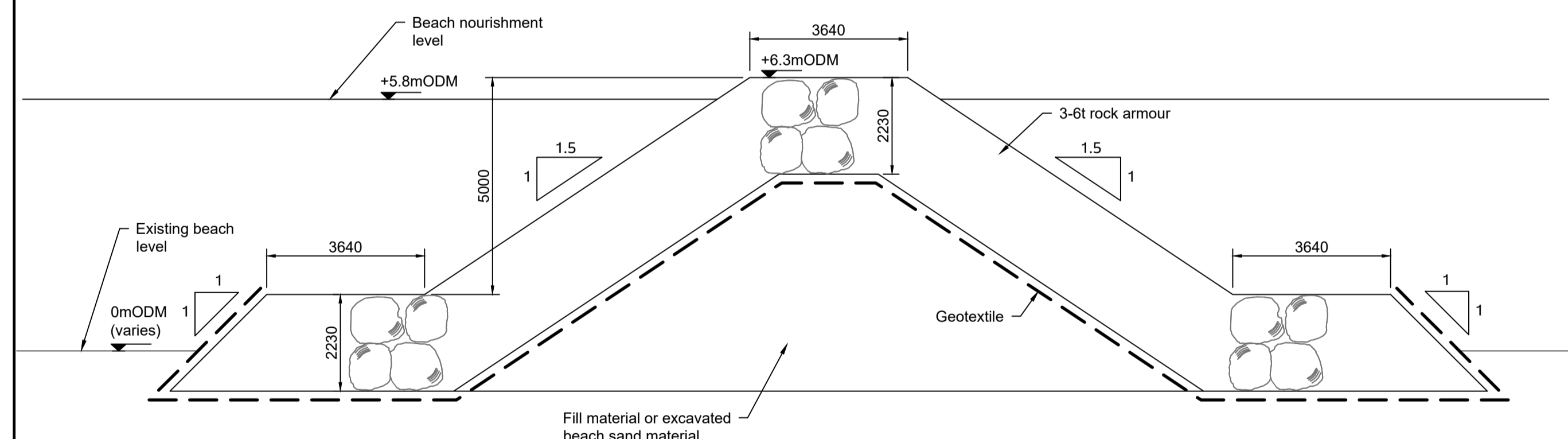
1. All levels are in mODM
2. Do not scale from this drawing.
3. Additional tide conversions are available for high and low water (spring and neap tides) at Secondary Ports of Dublin Bar, Dun Laoghaire, Greystones (high only) and Wicklow. High tides at CCA6 are typically 1.2m lower than at Dublin.
4. Design beach profile is approximate and to be confirmed through design development following completion of Ground Investigation works.
5. Refer to dwg 7694-CCA5-P2-DWG-CV-JAC-0110 for estimated equilibrium beach shapes.
6. All levels and dimensions are approximate and to be confirmed during design development.
7. Topography taken from OPW Lidar, 2011. To be updated on completion of 2023 UAV survey.
8. For cross section locations refer to drawing 7694-CCA5-P2-DWG-CV-JAC-0110.

Legend

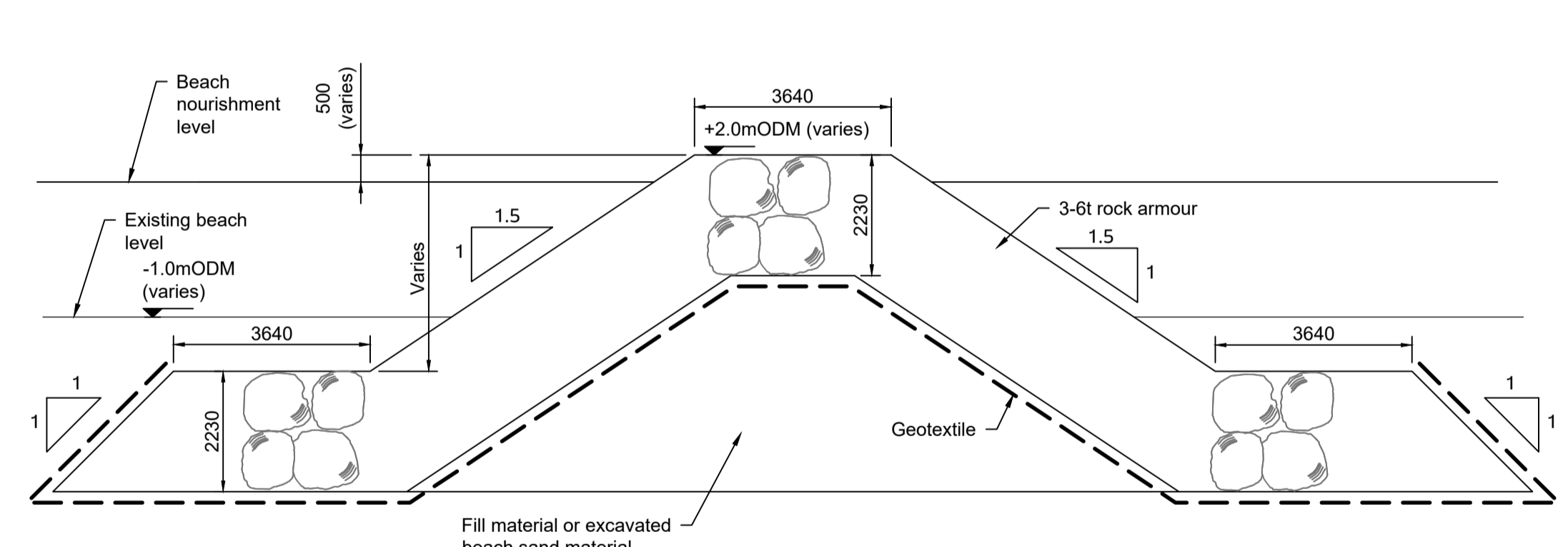
---	Geotextile
mODM	
+1.99	HAT
+1.59	MHWS
+0.89	MWHN
-0.11	MSL
-1.01	MLWN
-1.81	MLWS
-2.61	LAT
TIDE BAR	
DUBLIN NORTH WALL	
(STANDARD PORT)	



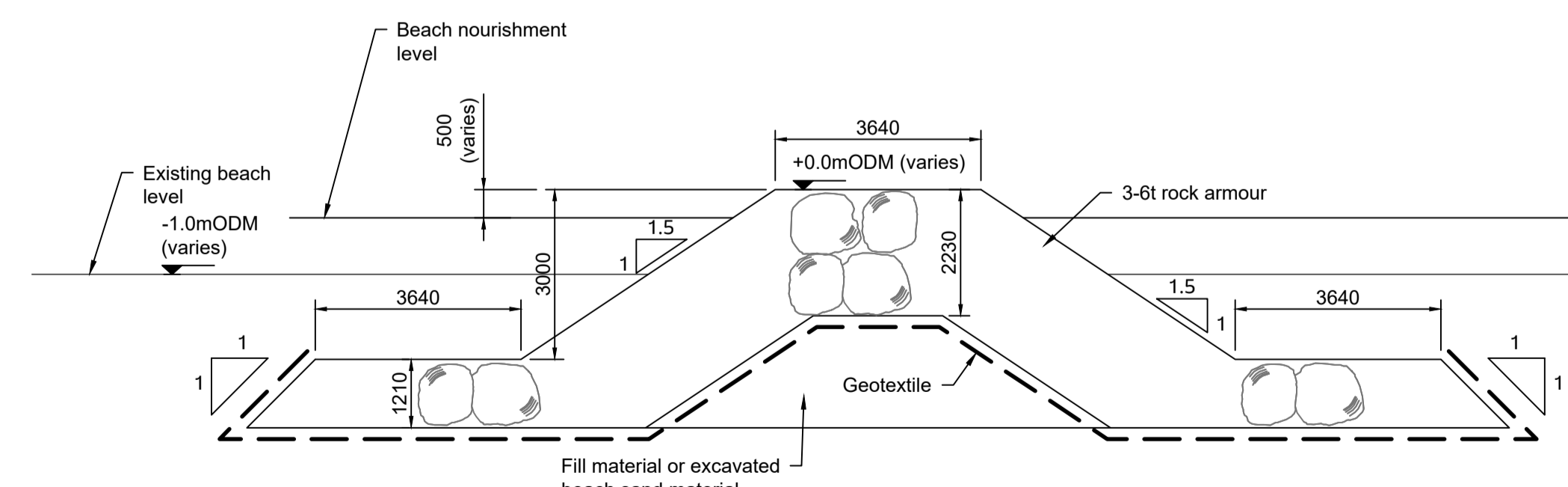
CCA5 - B - OPTION B - DESIGN BEACH TYPICAL CROSS SECTION
Scale 1:200



CCA5 - B - OPTION B - TYPICAL GROUYNE CROSS SECTION 1
Scale 1:100



CCA5 - B - OPTION B - TYPICAL GROUYNE CROSS SECTION 2
Scale 1:100



CCA5 - B - OPTION B - TYPICAL GROUYNE CROSS SECTION 3
Scale 1:100

Rev	Rev. Date	Purpose of revision	Drawn	Checked	Rev'd	Apprv'd
V01	29-02-2024	Client Accepted	AE	RM	JG	DK
B	24-01-2024	Comments addressed	AE	JG	JUD	DK
A.1	30-11-2023	Draft issue for information	AE	JG	JUD	DK

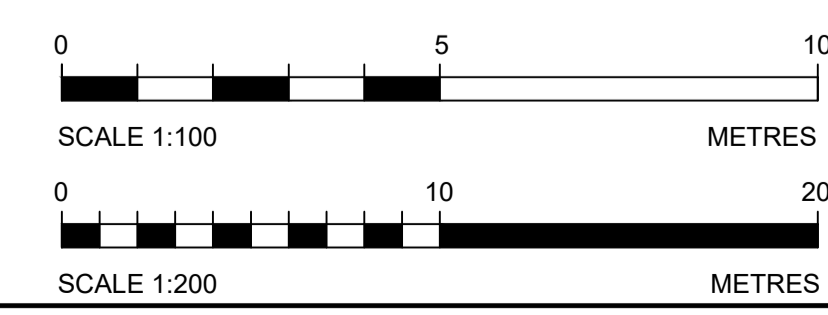
Client: **lanród Éireann Irish Rail**

Designer: **Jacobs**
Merrion House, Merrion Rd, Dublin 4, Ireland, D04R2C5, Tel: +44 (0)203 9802000 www.jacobs.com

Project: **ECRIPP**

Drawing title: **CCA5-B CROSS SECTIONS OPTION B**

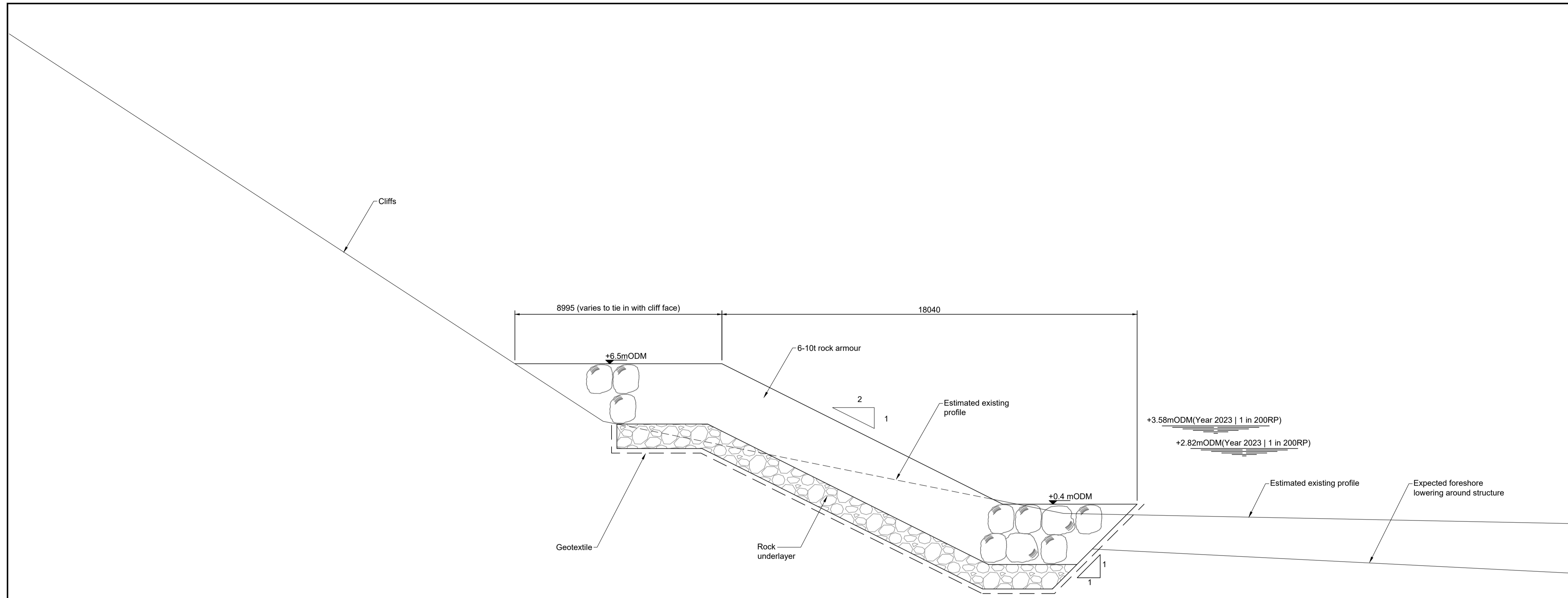
Drawing status: Accepted	
State Code	Contract / Work Package 5
Project Stage	Project Concept, Feasibility & Option Selection
Scale	As Shown DO NOT SCALE
Jacobs No.	D3658300 Rev V01
Client no.	7694
Drawing number	7694- CCA5 - P2 - DWG - CV - JAC - 0211



C:\pwworking\jacobs-emea-01\680147694-CCA5-P2-DWG-CV-JAC-0211.dwg - 29/02/2024 13:11:47 - 0211 - RM059324

© Ordnance Survey Ireland 2023/OSI_NMA_180. All elevations are in metres and relate to OSI Geoid Model (OSGM02) Malin Head as defined by existing Project Control. All Co-ordinates are in Irish Transverse Mercator Grid (ITM) as defined by OSI active GPS station Tallaght College (TLLG).

© Copyright 2023 Jacobs U.K. Limited. The concepts and information contained in this document are the property of Jacobs. Use or copying of this document in whole or in part without the written permission of Jacobs constitutes an infringement of copyright. Limitation: This drawing has been prepared on behalf of and for the exclusive use of Jacobs' Client, and is subject to, and issued in accordance with, the provisions of the contract between Jacobs and the Client. Jacobs accepts no liability or responsibility whatsoever for, or in respect of, any use of, or reliance upon, this drawing by any third party.



CCA5-B OPTION C - TYPICAL CROSS SECTION ROCK REVETMENT
Scale 1:100

- Notes:**
- All levels are in mODM
 - Do not scale from this drawing.
 - Additional tide conversions are available for high and low water (spring and neap tides) at Secondary Ports of Dublin Bar, Dun Laoghaire, Greystones (high only) and Wicklow. High tides at CCA6 are typically 1.2m lower than at Dublin.
 - Design beach profile is approximate and to be confirmed through design development following completion of Ground Investigation works.
 - Refer to dwg 7694-CCA5-P2-DWG-CV-JAC-0110 for estimated equilibrium beach shapes.
 - All levels and dimensions are approximate and to be confirmed during design development.
 - Topography taken from OPW Lidar, 2011. To be updated on completion of 2023 UAV survey.
 - For cross section locations refer to drawing 7694-CCA5-P2-DWG-CV-JAC-0110.

Legend

--- Geotextile

mODM

- +1.99 HAT
- +1.59 MHWS
- +0.89 MWHN
- 0.11 MSL
- 1.01 MLWN
- 1.81 MLWS
- 2.61 LAT

TIDE BAR
DUBLIN NORTH WALL
(STANDARD PORT)

Rev	Rev. Date	Purpose of revision	Drawn	Checked	Rev'd	Apprv'd
V01	29-02-2024	Client Accepted	AE	RM	JG	DK
B	24-01-2024	Comments addressed	AE	JG	JUD	DK
P01.1	17-11-2023	Draft issue for information	AE	JG	JUD	DK

Client

Designer:

Merrion House, Merrion Rd, Dublin 4,
Ireland, D04R2C5. Tel: +44 (0)203 9802000
www.jacobs.com

Project

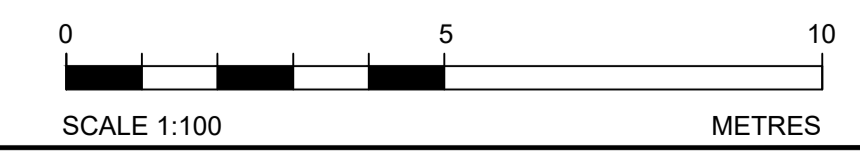
Drawing title

**CCA5-B
CROSS SECTION
OPTION C**

Drawing status: **Accepted**

State Code	Contract / Work Package 5	
Project Stage	Project Concept, Feasibility & Option Selection	
Scale	1:100	DO NOT SCALE
Jacobs No.	D3658300	Rev V01
Client no.	7694	

Drawing number	Project No	Work Package	Phase
7694-	CCA5	-P2	-
Type	Discipline	Originator	Number
DWG-	CV	-JAC	-0212



C:\pwworking\jacobs-emea-01\601890147694-CCA5-P2-DWG-CV-JAC-0212.dwg - 29/02/2024 13:14:46 - A1Frame - RM059324

© Ordnance Survey Ireland 2023/OSI_NMA_180. All elevations are in metres and relate to OSI Geoid Model (OSGM02) Malin Head as defined by existing Project Control. All Co-ordinates are in Irish Transverse Mercator Grid (ITM) as defined by OSI active GPS station Tallaght College (TLLG).

© Copyright 2023 Jacobs U.K. Limited. The concepts and information contained in this document are the property of Jacobs. Use or copying of this document in whole or in part without the written permission of Jacobs constitutes an infringement of copyright. Limitation: This drawing has been prepared on behalf of and for the exclusive use of Jacobs' Client, and is subject to, and issued in accordance with, the provisions of the contract between Jacobs and the Client. Jacobs accepts no liability or responsibility whatsoever for, or in respect of any use of, or reliance upon, this drawing by any third party.